

LEADERSHIP IN ACTION



ANNUAL REPORT | 2015-2016





Lions Foundation of Canada Dog Guides

152 Wilson St. Oakville, Ontario L6K 0G6

Phone: 905-842-2891 1-800-768-3030

Breslau: 519-648-3780 1-888-624-5291

TTY: 905-842-1585 Fax: 905-842-3373

Email: info@dogguides.com

www.dogguides.com

www.chiens-guides.com

Charitable Numbers:

Lions Foundation of Canada 13024 5129 RR0001

Dog Guides Canada 11883 7046 RR0001

Table of Contents

Message from the Chairperson & Executive Director	3
Leadership in Action	4
A Life-Changing Match / Dog Guides' Programs	5
Building Leadership	6
Leading with Best Practices	7
Leadership Starts Here	8
Leadership & Expertise	9
Graduates Leading the Way	10
Graduate Success	11
Volunteers Leading the Way	12
Lions Leading the Way	13
Walk for Dog Guides	14
Leadership in Giving	16
Donations at Work	17
Financial Statements	18
Leading the Way by Leaving a Legacy	20
With Our Thanks	22
Gifts in Kind	25
Lions & Lioness Club Contributions	26
Award Programs	30
Patron Awards	33
Walk for Dog Guides Results	34

Message from the Chairperson & Executive Director

As another year closes, it's an honour to acknowledge those who shared in the past year's successes. We achieved so many of our goals, and are continuing on a plan to provide more of the very best possible Dog Guides to a wide range of Canadians. That's how we define leadership.

Leadership is demonstrated in so many facets of this organization, and this report highlights just some of those ways. Our six programs are growing, and consistently demonstrating quality delivery and best practices throughout the process of building capacity. Our committed and professional staff matched 159 people with life-changing Dog Guides last year – a placement level that is our highest yet, and moving quickly to our next goal of 200 partnerships per year.

Our fundraising capacities expand each day to allow us to do more still, and our services would not be possible without our many long-term donors. With increasing support, we will continue to expand to meet our growing needs.

An example of that wonderful growth is the record year we celebrated with our Walk for Dog Guides, which achieved a 9-per-cent increase over the previous year, bringing donations from across the country to a total of just over \$1.3 million.

These successes are due to wonderful leadership from our Board of Directors, talented staff, dedicated volunteers and ever-essential donors.

Congratulations to all of our leaders!

Sandy Durney

Executive Director

Douglas Cook

Chairperson



Leadership in Action

Lions Foundation of Canada is an organization demonstrating leadership in all facets. Its mission is to provide Dog Guides to Canadians with physical and medical disabilities at no cost. With dedicated staff, volunteers, and supporters, it fulfills this mission, despite a cost of \$25,000 to raise, train, and match each Dog Guide, while receiving no government funding.

These pages contain just a few of the many examples of leadership in action, and the people who make these partnerships possible.



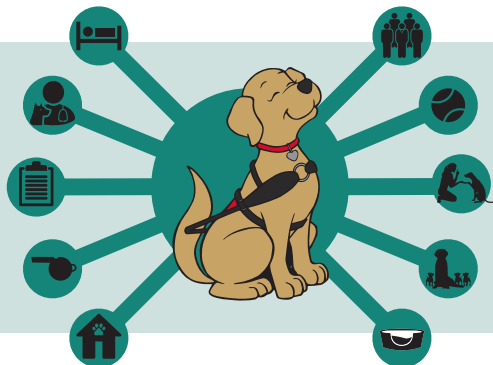
Greg
28 Years with
Dog Guides

Rhonda
19 Years with
Dog Guides

Gloria
20 Years with
Dog Guides

Head Instructors with Dog Guides in training

A Life-Changing Match



Breeding and care of Dog Guide puppies	\$1,800
Maintenance of breeding facility	\$1,780
Kennel care and maintenance.	\$2,035
Veterinary care	\$1,560
Kennel supplies.	\$290
Training of Dog Guide + hands-on instruction for recipient	\$6,400
Accommodation, meals + travel for recipient in training	\$1,440
Dog Guide supplies + harness	\$400
Training centre + administration costs	\$7,700
Assessment + ongoing support of Dog Guide team.	\$1,645

Average cost of making a life-changing match possible **\$25,000+**
Cost to the recipient of a Dog Guide **\$0**



Dog Guides' Programs:

- Canine Vison Dog Guides**
for people who are blind or visually impaired
- Hearing Ear Dog Guides**
for people who are deaf or hard of hearing
- Service Dog Guides**
for people who have a physical disability
- Seizure Response Dog Guides**
for people who have epilepsy
- Autism Assistance Dog Guides**
for children with an autism spectrum disorder
- Diabetic Alert Dog Guides**
for people who have type one diabetes
with hypoglycemic unawareness



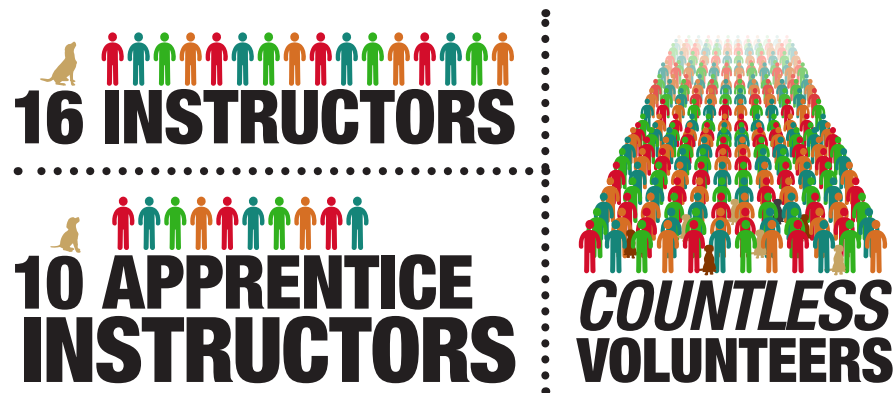
“It’s been an amazing journey working at Lions Foundation; being a part of an organization with such a phenomenal purpose is very humbling.”

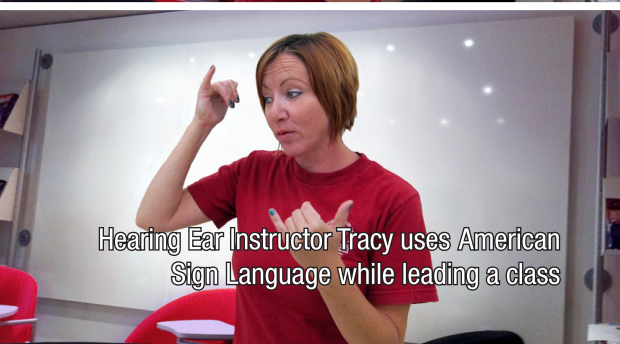
— Gloria Peckham, Head Instructor,
20-year career with Lions Foundation

Building Leadership

A leader is someone who inspires and motivates action, making it possible for others to achieve great things. Dog Guide Instructors embody these traits, and the supportive structure of its three-year Apprenticeship program ensures those at the beginning of their careers grow into strong, capable leaders in their own right. With career trajectories that highlight their dedication to people and Dog Guides, our Instructors taught 159 graduates this past year as they were matched with their Dog Guides – a new record for number of graduates in one year.

Leadership in Action:





Hearing Ear Instructor Tracy uses American Sign Language while leading a class

Leading with Best Practices

Lions Foundation of Canada is an accredited member of Assistance Dogs International (ADI) and the International Guide Dog Federation (IGDF), the two worldwide associations which train and provide service and guide dogs. Both leading authorities in the industry, each sets best practices, and ensures member organizations are accredited to meet and exceed these objectives, exhibiting the highest level of international standards.

Lions Foundation is also a founding member of the Canadian Association of Guide and Assistance Dogs Schools, a working cooperative of accredited schools in Canada which provide assistance dogs.

As a registered charity, Lions Foundation is an accredited member of Imagine Canada's Standards of Excellence program, adhering to its best practices. Imagine Canada sets standards that build and strengthen the charitable sector in Canada.

Accreditation with these organizations means Lions Foundation continually renews its commitment to the highest standards in our industry – sharing, learning and leading.





Leadership Starts Here

It takes a strong start to change lives.

The work of preparing a Dog Guide for its future partnership begins before it's even born, and reflects the commitment to excellence the breeding program continually demonstrates. Last year, the percentage of puppies qualifying as Dog Guides was 67 per cent, a result of the success of the breeding program which selects those dogs that exhibited the best combination of health, intelligence, temperament, and trainability. The program achieves these results by carefully screening potential breeding dogs, and singling out the very best to produce future Dog Guides who embody these traits.

This past year, 247 dogs entered Dog Guides' programs. Breeds included Labrador retrievers, Labrador-golden retriever crosses, and standard and miniature poodles. Just over 400 volunteer foster families contributed to this effort last year, raising the next generation of Dog Guide puppies.

*"I feel good about what we do as a team,
and at the end of the day, I feel lucky that we're
able to contribute to something so important."*

— Sam Hobbes, Puppy Program & Breeding Coordinator ►►



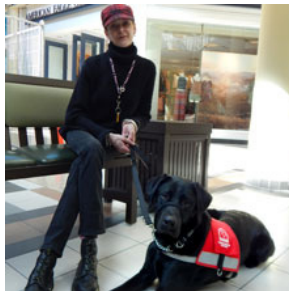
Leadership & Expertise

The success of Lions Foundation's breeding and foster puppy programs credits the experience and education of its expert staff, including Sam Hobbes, Puppy Program and Breeding Coordinator, for whom a master's thesis turned into a career. A research paper on companion animal genetics in her final year of university set Hobbes on her current path. "My professor told me, 'this paper would make a great master's thesis,'" she recalls of her studies examining the theoretical and applied aspects of breeding programs. "So my thesis became a year-long project focused on breeding within the context of service dog training schools."

Sam ensures that future Dog Guides get the best starts possible. "Basically from conception all the way through until these dogs are ready to start their formal training, that's my focus."

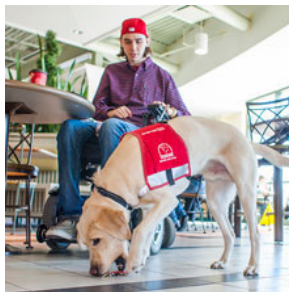
Graduates Leading the Way

Everything Lions Foundation does is directed toward the end goal of making more life-changing matches possible for Canadians with physical and medical disabilities. These are just a few of the partnerships that resulted last year:



"I am so deeply appreciative of all the work - everything - that has made Blarney the amazing dog that he is. I rely on him from the moment I wake up in the morning, and I don't take anything for granted."

— Lesleigh, with Seizure Response Dog Guide Blarney



"Ufton has become my teammate, and an extension of me in many ways. His instincts to help and the training he's received are second nature, and it's really nice to be able to rely on that."

— Sean, with Service Dog Guide Ufton

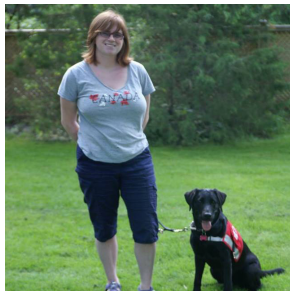


"My life has become busier, more active, and altogether much, much better since Juno entered it. I laugh more, and end each day with feelings of profound contentment and gratitude."

— Megan, with Diabetic Alert Dog Guide Juno

“Having Heart has given me purpose. I go out each day with her and feel safe knowing she’ll alert me if there are any troubles. At home, I feel like I know what’s going on. My mom can call me from anywhere and Heart lets me know, or if the doorbell rings, she alerts me so I can answer it.”

— Elizabeth, with Hearing Ear Dog Guide Heart



“Going from using a white cane to get around to having a Canine Vision Dog Guide was like going from driving a Volkswagen to a Maserati!”

— Colin, with Canine Vision Dog Guide Roger



“Before Gibson, we had never really been on a family vacation. Since Will was matched with Gibson, we’ve taken two trips together so far, which has been a gift for all of us as a family. This is something we’ve only been able to dream about until now.”

— Christina, mom to William
with Autism Assistance Dog Guide Gibson



Graduate Success

Once again, Lions Foundation received positive results in its annual survey from a representative sample of all its graduates. The data reflects all facets of the Lions Foundation’s client experience, from the application process right to follow-up support. Categories are rated on a scale of 1 to 10, with 10 being the highest.





Leadership in Action:

“Every hour volunteered helps the end goal. It’s like a large puzzle – every piece is needed to complete it.”

– Nicky, long-time volunteer and foster parent

Volunteers Leading the Way

Volunteers are an integral part of Lions Foundation, and can be found taking on a variety of roles, lending their expertise, passion, and life experiences to help fulfill the organization’s mission.

Volunteers work with Dog Guides-in-training, walking, grooming, and ensuring they receive plenty of extra time to play. Other volunteers work alongside administrative staff, and provide assistance with events, office tasks, and fundraising.

A large group of volunteers, our foster families open their homes to Dog Guide puppies, make a commitment that requires 24 hours a day and seven days a week for up to a year at a time as they raise the next generation of Dog Guides.





Lions Leading the Way

Lions Foundation of Canada was established in 1983 by Lions Clubs from across Canada who took on the ambitious task as a national project. Two years after that, the first graduates in the Canine Vision program started their lives with increased mobility and independence thanks to their Dog Guides.

More than three decades later, Lions clubs continue to support Lions Foundation in vital ways as their officially recognized national project. In 2015-16, hundreds of clubs donated to Lions Foundation's sponsorship program, contributing \$508,839. Sponsorships offset a significant portion of the \$25,000 it takes to raise, train and place a Dog Guide. Lions clubs from every province contributed to the Foundation in this important way last year.

Lions clubs made up the majority of organizing communities for the Walk for Dog Guides, with 264 Lions, Lioness and Leo clubs taking on this fundraising effort in their cities and towns – a number which increased from 249 clubs the previous year.

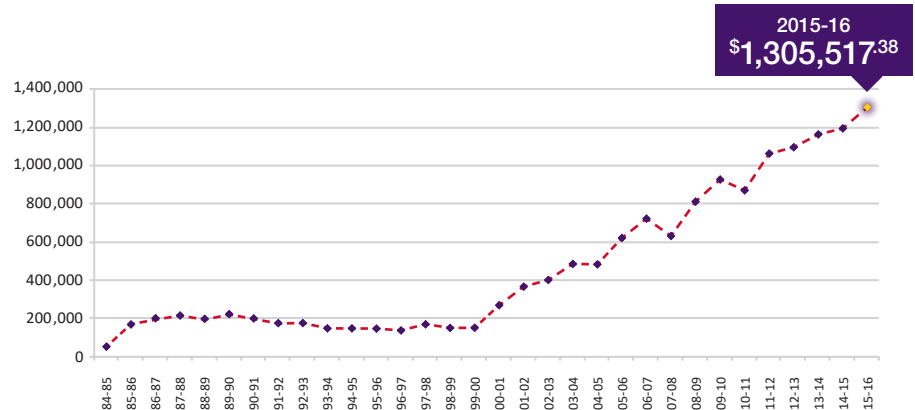


Walk for Dog Guides

This past year, 245 communities across Canada united with one cause in mind: to give Canadians with physical and medical disabilities a new leash on life.

This record number of communities participating in the Walk for Dog Guides set a new fundraising record as well. Thanks to the dedicated work of organizers, the support of their communities, the efforts volunteers contributed, and the generosity of each and every donor, a new Walk fundraising record was achieved with \$1,305,517 raised collectively, with support coming from every province in the country.

Walk Totals





Leadership in Action:

“Being matched with my first Canine Vision Dog Guide was the best gift I ever received. Organizing a walk in Lethbridge is one way for me to help pay it forward so others can receive that life-changing gift, too.”

— PDG Bill Brown, Dog Guide recipient and
◀ organizer of the Walk in Lethbridge, Alta.

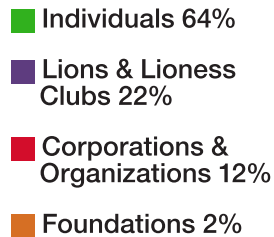
Leadership in Giving

Lions Foundation simply couldn't reach its fundraising goals without the outstanding leadership demonstrated by its many supporters.

This past year, 21,317 donors gave increased independence, safety, and mobility to fellow Canadians through their support. Whether large or small, all donations made, and continue to make, a big impact.

Lions Foundation counted on the leadership of corporate partners who played vital roles in raising funds and public awareness about the work of Dog Guides. Companies such as Pet Valu, Unitron, and Nestle Purina PetCare, among many others, were instrumental in celebrating the positive end results of our Dog Guide partnerships.

Sources of Donations



Leadership in Action:

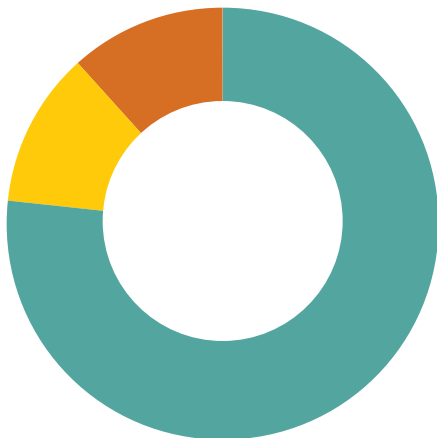
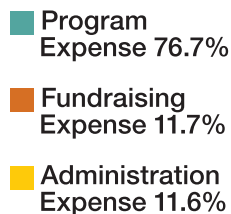
"It's a privilege to meet the teams I've sponsored during the graduation ceremonies. It's something that's real and tangible, and it's really nice to know I could be a part of the process. It was my daughters who started this important work – they loved dogs – and it's their memory that I'm honouring by continuing it."

– Mrs. Mavis Berwick,
Lions Foundation supporter

Donations at Work

Lions Foundation strives to operate as efficiently and transparently as possible, and puts every dollar donated to the best use. It is accountable to a wide range of stakeholders including donors, clients, volunteers, Lions clubs, companies, and foundations. The trust that is put in this organization to use contributions wisely and operate in a fiscally responsible manner is paramount.

How Funds were Spent



Leadership in Action:

Future Dog Guide Irv showed Canadian pride by donning a Pet Valu bandana this past Canada Day. The bandana campaign allowed Pet Valu customers across the country to directly support Lions Foundation through the purchase of one. Pet Valu sponsored its 31st Dog Guide team last year.

Financial Statements

Consolidated Statements of Operations and Net Assets

	GENERAL		RESTRICTED		TOTAL
	Dog Guide Endowment		Stevenson Fellowship		
Year Ended June 30	2016	2016	2016	2016	2015
Revenues					
Donations	\$ 3,322,459		\$ 140,729	\$ 3,463,188	\$ 4,047,346
Walk for Dog Guides	1,305,517			1,305,517	1,195,154
Life Memberships	58,100			58,100	65,228
Fellowships	7,750			7,750	15,358
Grants	101,232			101,232	168,324
Investment Income	147,058			147,058	730,472
Other Income	82,144			82,144	61,896
Events	227,540			227,540	207,871
Gift Shop	22,296			22,296	16,782
	5,274,096	-	140,729	5,414,825	6,508,431
Expenditures					
Administration	440,287			440,287	414,960
Depreciation	296,326			296,326	303,756
General	283,427	\$ 68,965	44,350	396,742	377,402
Fundraising	477,670			477,670	459,382
Marketing	238,237			238,237	255,926
Property	443,727			443,727	480,592
Program Costs:					
Assessment & Follow-Up	104,771			104,771	89,090
General	44,889			44,889	63,755
Salaries & Benefits	1,977,652			1,977,652	1,692,259
Student	234,213			234,213	218,473
Veterinary	256,074			256,074	195,078
	4,797,273	68,965	44,350	4,910,588	4,550,673
Excess of revenues over expenditures (Expenditures over revenues)	\$ 476,823	\$ (68,965)	\$ 96,379	\$ 504,237	\$ 1,957,758
Interfund transfers	(106,902)	68,965	37,937	-	-
Net Assets Beginning of Year	10,381,721	4,728,519	2,799,763	17,940,003	15,982,245
Net Assets End of Year	\$ 10,751,642	\$ 4,758,519	\$ 2,934,079	\$ 18,444,240	\$ 17,940,003

Consolidated Statement of Financial Position

	GENERAL		RESTRICTED		TOTAL
	2016	Dog Guide Endowment 2016	Stevenson Fellowship 2016	2016	2015
As at June 30					
Assets					
Current - Cash and Short-Term Investments	\$ 653,346		\$ 8,325	\$ 661,671	\$ 522,501
Current - Other	1,163,978		-	1,163,978	1,193,668
	1,817,324		8,325	1,825,649	1,716,169
Long-Term Investments	3,972,730	\$ 5,593,422	3,207,586	12,773,738	12,162,351
Capital Assets	5,336,687			5,336,687	5,609,658
	\$ 11,126,741	\$ 5,593,422	\$ 3,215,911	\$ 19,936,074	\$ 19,488,178
Liabilities					
Current - Other	\$ 375,099	\$ 834,093	\$ 281,832	\$ 1,491,834	\$ 1,548,175
	375,099	834,093	281,832	1,491,834	1,548,175
Net Assets					
Invested in Capital Assets	5,336,687			5,609,658	5,625,315
Externally Restricted	-	4,758,519	2,934,079	7,692,598	7,558,282
Unrestricted	5,414,955			5,414,955	4,772,063
	\$ 11,126,741	\$ 5,593,422	\$ 3,215,911	\$ 19,936,074	\$ 19,488,178

Financial Statements have been audited by Charles Havill, Chartered Accountant and are available at www.dogguides.com or upon request.

Lions Foundation of Canada Annual Report 2015-2016



Leadership in Action:

"It feels good to have done something that not only honours my mom and dad, but also makes a difference in other people's lives."

— Don McGowan

Leading the Way by Leaving a Legacy

◀ Margaret & Sam McGowan

For Lions Foundation supporter Don McGowan, planned giving became a way to honour the memory of his beloved parents, while making a lasting impact on the organization that had inspired them. As the trustee of their estate, Mr. McGowan set up the Sam and Margaret McGowan Charitable Trust through the Oakville Community Foundation in his parents' honour, a fund which has provided sponsorships for 14 Dog Guide teams over the years since. It's become a lasting legacy, from one generation to the next.

2015-2016 Legacy Leaders

Patricia Bailey	Julie Dragich	Tom & Linda Kennedy	Susan Pexman
Nancy Beatty	Christa Ellis	Sharon Klein	David Platt
Mavis Berwick	Joanna Fraser	Maguerite Leid	Nancy Riley
Bill & Lynda Brown	Elsie Giles	Stewart Macdonald	Ward & Shirley Russell
Sylvia Brown	Valerie Jean Griffiths	Stella Magic	Peter Scagnetti
Diane Brown	Sharran Habok	Sandra Maldonado	Bev Schindelka
Sandra Bryson	Dianna Halcrow	Maggie Mann	Dorine Somerset
Janet Burns	Nancy Handisyde	Beverley Mascola	Penny-Anne Soper
Carol Campbell	Carol Haycock	John & Suan McCracken	Diane Stoddart
Louise Colegrove	Katherine Hewko	Donald & Julia McGowan	Josephine Wale
Marilyn Couperthwaite	Thomas Hutchinson	Karen McMillan	Tammy Walsh
Gladys Cummins	Tracy Johnston	Freda Millar-Szemenyei	Pamela Wathen
Jennifer Dale	Yvonne Jones	Tom Moreau &	
Georgina Davey	Mary Jubinville	Diane Brockman	
Marlene Demaray	Thomas R. Kay	Diane Nayda	
Mildred Dmowski	Harold & Gladys Kendal	John & Joanne O'Lenuk	



With Our Thanks

Individuals, companies, foundations, organizations and estates

Every donation to Lions Foundation of Canada makes a difference. The individuals and organizations listed are donors who have contributed \$1,000 or more. We thank all donors for their support.

\$100,000+

Nestlé Purina PetCare
Pet Valu Canada
The Estate of Ellen Mae Osman
The Estate of Harry Smith
The Estate of William Riley

\$50,000 - \$99,999

Berwick, Mavis
The Estate of David Hughes
The Estate of Gordon Dandy
The Estate of Lillian Wright
The Estate of Marilyn Crompton
The Estate of Rose Rubinoff

\$20,000 - \$49,999

Beaty Family Foundation - The
Oakville Community Foundation
Cserhalmi, Debbie
Davidson, Wallace & Marion
G. Murray & Edna Forbes Foundation-
South Saskatchewan Community
Foundation
Jaskula Jarvis Golf Tournament
Koekoek, Sean & Lisa
Lethbridge & District Kennel Club
McGillivray, Bruce & Carol
Nemeth, Margaret
Rayment & Collins Ltd.
The Caroline Cunningham Foundation
for Epilepsy
The Estate of Audrey Henderson
The Estate of Audrey Stanley
The Estate of Mary McConnell
The Estate of Mollie Adamson
The Estate of Raili Nixon
The Estate of Stella Hamilton
The Leonard and Gabryela Osin
Foundation
Totten Insurance Group
Unitron Hearing

\$10,000 - \$19,999

Anonymous
ArcelorMittal Dofasco Inc.
Bernace Davison Davies Foundation
Cadillac Fairview Corporation
Congregation Chabad Lubavitch of
Greater Boynton Beach
David Moxam Memorial Sponsorship
Devaraj, Chikkahanumaiah
Fraser, June Anne
Halton Helping Hands Services
Jack's Snooker Club
James & Barbara Snow Family
Foundation - The Oakville Community
Foundation
McCorriston, Robert
McCorriston, W. Lewis
McDar Enterprises Ltd.
PJ's Pet Centres
Scotiabank - Toronto, ON
Spicer, Louise
The Estate of Judith Minogue
The Estate of Wendy Baranowski
Toronto Airline Operators Committee
Toyota Motor Manufacturing Canada
Webb, Joyce

\$5,000 - \$9,999

Bannerman, Larry
Bossy, Richard & Gabrielle
Buckspan, Martin
Canadian Tire Store #40 - RJJ
Holdings Ltd.
Creighton, Patricia
Grimsby Rotary @ Noon
Hale Veterinary Professional Corp.
Havergal College Junior School
Hebel, Glen & Ruth
Iacono, Robert
Jarvis, Craig
Kreiner Family Fund
Macartney, Mark
Metro Toronto Ford Dealers Business
Association
Mezon, Linda
Miles, Wendy
Moreau, Tom & Brockman, Diane
Neufeld, Patrick
Ontario Foundation for the Korean
Blind
Ontario Refrigeration & Air
Conditioning
Ostro, Michael & Aurelia
Passport to Freedom

Pat Addy Working Dogs Fund -
Community Foundation for Kingston
& Area
Perrier, Theresa
Power Corporation of Canada
President's Choice Children's Charity
Russell, Ward & Shirley
Salna, Vida
Saraka, Frank & Susan
Scotiabank - Lethbridge, AB
The Estate of Carol Haycock
The Estate of George Braun
The Fenella Foundation
The Geoffrey H. Wood Foundation
The Sam & Margaret McGowan
Charitable Trust for Dog Guides - The
Oakville Community Foundation
Thomas, Brian & Susan
Welsh, Faye

\$1,000 - \$4,999

Abbott, Debby
Agrapadis, Dimitrios
All Charities Campaign
Allan, Judy
Anonymous
Arbour Memorial
AVE Farms Ltd.
Bank of Montreal - Bowmanville, ON
Baradziej, Mike
Bartlett, Douglas
BenefAction - Joanne & Tom Cowan
Foundation

Benevity Community Impact Fund
Beusekom, Jim
Birtle Value Shop
Blue Venue Events
Boyd, Patricia
Brend Butler Family Fund 2 - The
Niagara Community Foundation
Butler, Miles
Callow, Ernest
Campagna, Leo
Campbell, Carol
Camping In Style Whitby
Canadian Tire Associate Store - A.J.
Ersner Holdings Ltd.
Canadian Tire Associate Store - D.R.
Fleming Investments Inc.
Casey, Kathleen
Cenovus Energy
Chant, Kathy
Cheung, Nancy
CIBC Mellon Global Securities Services
Clark, Laureen
CN
CN Employees' and Pensioners'
Community Fund
Cole-Perkins, Eileen
Collins, Donald
Cornelisse, Leonard
Cotterill, Brenda
D.D. Mac Electric Ltd.
Daciuk, Tony
Davey, Georgina
Davies, John

Davy, Denise
Day, Teri
Denis, Leonard
Dennis & Karen Winchar Charitable Fund
Devitt, William
Diatryma Limited
Divecha, Zareer
Dr. Leonard Reeves Foundation
Dunke, Jeanette
Eberts, Jennifer
Eberts, Edmond
Educational Resource Facilitators of Peel
Elias, Olive
Ellis, Gwen
Faba, L. Gino
Feere, Frank
Franklin Templeton Investments Corp.
Furlong, Michael & Nancy
Gander Goodwill Centre
Gauld, Tom
Girard, Drew & Pam
Good Sam Peninsulars
Gordon, Elizabeth
Grainger, Brian & Janet
Greey-Lennox Charitable Foundation
Haigh, Ursula
Hall, Jeffrey
Halton Hearing Centre
Harper, Sherry
Henderson, David & Lina
Henderson, Milton
Herfst, Rob
Hildebrandt, Doris

Hoggart, John & Jane
Housel, Susan
Huculiak, Kim
Hydro One Employee's Charity Trust
Fund
Iedema, Martin
Ikki Sushi Japanese Cuisine
Investors Group Financial Services
Irwin, Dale
Jarrett, Edna
Jaskula, Pat
Johnston, Susan
JRG Family Fund - The Calgary Foundation
Kalbun, Angela
Kay, Joanne
Kee, Douglas
Kelly, Mary
Ketcheson, J.D.
Knowles, Jennifer
Knubley, P.R.
Kroetsch, Allyson
Kurtz, John & Sharon
Kuwahara, Karen
Lawless, Matthew
Leacy, Michael
Lee, Jeannie
Legg, Diane
Les Construction Robert Robin
Lethbridge Fire Fighters
Lexus of Oakville
Lloyd, Felicia
Mah, Ping
Marissen, Harry & Janet

With Our Thanks *(Continued)*

\$1,000 - \$4,999 (continued)

Marsh, Howard
Martin, Kim
McArthur, Hugh
McCormick, MaryAnn
McCracken, John & Susan
McDonald, Karen
McDonnell, Stephen
McKichan, James & Audrey
Metro Supply Chain Group
Mercier, Kristi
Millard, Dave
Milligan, John
Milley, Greg
Moon Enterprizes
Morin, Danielle
Mundle, Shirley
Murphy, Lori
Murphy, Sean
Murray, Carol
Murray, Stephen
MyTributeGift Foundation
Neil, Stephen
Nixon, Betty
Noble, Cheryl
Novartis Animal Health Canada
Oakland, Wade
Oita Investments
Old Newcastle House Taps & Grill
Ontario Power Generation Employees
Charity Trust

Order of the Eastern Star - Blue Ray
Chapter No. 238
Owens Sweitzer (1972) Ltd.
Peartree Financial Services Ltd.
Pet Valu #3005 - Winnipeg, MB
Pet Valu #3013 - Winnipeg, MB
Pet Valu #3023 - Winnipeg, MB
Pettit, Yvonne
Ping, Mah
Platt, David
Ponzo, Patricia
Practica Ltd.
Prawdzik, Mark
Prytula/Charpentier Foundation
Purdy, Robert
Pye, Florence
Quickie Community Foundation -
Brockville
Randall, Neil & Carol
RBC Foundation
Regional Municipality of Peel
Riberdy, Jere
Rice, Eleanor
Riley, Kenneth
Rob Parker Memorial Sponsorship
Roberts, Margaret Susan
Rosetown Central Refrigeration &
Air Conditioning Ltd.
Ross, Cameron
Rotary Club of Brampton

Rotary Club of St Catharines South
Royal Bank of Canada - Employee
Volunteer Program
Royal Canadian Legion - Col. J.E.L.
Streight - Branch 210
Royal Canadian Legion #127
Royal Canadian Legion Br. 272
Rozman, Marta
Russell Investment Group
Sauders Farm
Schmiedendorf, Yvonne
Schweigl, Gertrude
Sharpe, Blair
St. Louis Bar & Grill
Stanley & Schoel Enterprises
Streutker, Cathy
Sutherland, John & Barbara
Tara Lynn Giuliani Memorial Fund -
The Hamilton Community Foundation
Taylor, James
Telus Corporation
The Amarna Fund - The Oakville
Community Foundation
The Busy Busy Club
The Estate of Frederick Marlow
The Estate of Jeanne Scott
The Estate of Thomas Byrne
The John C. and Sally Horsfall Eaton
Foundation

The Ross & Doris Dixon Charitable
Foundation
The Tom and Janet Alton Family Fund -
The Oakville Community Foundation
The W.P. Scott Charitable Foundation
Tillsonburg Old Sox
Toner, Matthew
Tufford, Mary
Turner & Porter
Unifor Social Justice Fund Local 222
Walker Wood Foundation
Ward, Donna
Watson, Matt
Weaver, Victoria
Welsby, James
Wilson, Kathy
Woodhouse, Susan
Woofs 'n Wags
Xi Beta Upsilon
York Regional Police
Zimmerman, Margo





Gifts in Kind

2015-2016 Donors

With thanks to the following for donating items or goods & services valued at \$1,000 or more.

Berwick, Mavis
Food For Life
Halton Hearing Centre
Feikema, Karen
Merial Canada
Nestlé Purina PetCare
Passport to Freedom
Platt, David
Somerset, Dorine
Thompson, Olga
Williams, Tracey

Lions and Lioness Clubs Contributions

The clubs listed below donated \$1,000 or more in 2015-16

\$20,000+

District A-16 Autism Assistance Project
(DG Susan Tate 2015/2016)
District A-3
Oshawa West Lions Club
Sackville (NB) Lions Club

\$10,000 - \$19,999

Ariss & Maryhill Lions Club
Chester Basin-New Ross-Chester
Lions Club
District A-2 Charities
Edmonton Golden Gate Lions Club
Estevan Lions Club
Fenwick Lions Club
Fort Langley Lions Club
Kitchener Pioneer Lions Club
Langley Lions Club
Lions Club of Oakville
Newmarket North Lions Club
Regina Beach & District Lioness Club
Ridgeway Lions Club
Rockton Lions Club
Sackville (NS) Lions Club
St. Margaret's Bay Lions Club
Weston Lions Club

\$5,000 - \$9,999

Ajax Lions Club
Bonavista Lions Club
Bridgewater Lions Club
Calgary Heritage Lions Club
Calgary South Asian Lions Club
Clareville Lions Club
Coldbrook & District Lions Club
Courtland & District Lions Club
Deep Brook Waldec Lions Club
Digby and Area Lions Club
District 5-SKS Zone 2 Lions Clubs
District N-4
Fall River & Riverlake District Lions Club
Fergus Lions Club
Fisherville District Lions Club
Georgetown (ON) Lions Club
Grantham Lions Club
Guelph Lions Club
Hyde Park & District Lions Club
King City Lions Club
Lake Windermere & District Lions Club
Leduc Lions Club
Martensville & District Lions Club
Medicine Hat Lions Club
Merriton Lions Club
North Bay Lions Club
Palmer Rapids & Area Lions Club

Parkdale Sherwood Lions Club
Piapot Lions Club
Port Colborne Lioness Club
Riverview Lioness Club
Riverview Lions Club
St. Jacobs Lions Club
Straffordville Lions Club
Twillingate Lions Club
University of Waterloo Optometry Lions
Club Branch
Vernon Lions Club
Windsor & District Lions Club

\$2,500 - \$4,999

Alexander Bay Lions Club
Barrie Lions Club
Beamsville & District Lioness Club
Belleville Lions Club
Bowness Lions Club
Bradford Lions Club
Camrose Swans & Roses Lions Club
Chezzetcook & District Lions Club
Clareholm Lions Club
Cobourg Lions Club
Colborne & District Lions Club
Dereham District Lions Club
District C-1
District U-3
Dollars for Doggies
Drayton Valley Lions Club
Dundas (ON) Lions Club
Elmira Lions Club
Eston 95 Lions Club
Galt Cambridge Lions Club
Goulds Lions Club
Huttonville Lions Club
Lethbridge Lions Club
Lions Club of Courtice
Mantario Lions Club
Markham Lions Club
Metcalfe & District Lions Club



Lions and Lioness Clubs Contributions *(Continued)*

\$1,000 - \$2,499

Mississauga Central Lions Club
 Nashwaaksis Lions Club
 Newcastle (NB) Lions Club
 Newcastle (ON) Lions Club
 North Rustico Lions Club
 Peachland Lions Club
 Port Stanley Leo Club
 Regina Beach & District Lions Club
 Richmond Chinatown Lions Club
 Salt Spring Island Lions Club
 Saskatoon Millennium Lions Club
 Springbank Lions Club
 Stittsville District Lions Club
 Sylvan Lake & District Lions Club
 Truro & District Lions Club
 Uxbridge & District Lions Club
 Vancouver Pacific Lions Club
 Vancouver Shaughnessy Lions Club
 Vancouver South Lions Club
 Vermilion Bay Lions Club
 Virden Lions Club

Airdrie Lions Club
 Alberni Valley Lions Club
 Arnprior Lions Club
 Bayfield Lions Club
 Beamsville & District Lions Club
 Bears paw Lions Club
 Beaverlodge Lions Club
 Belle River Lions Club
 Black Creek Lions Club
 Black Creek Stevensville Lions Club
 Blue Ridge Lions Club
 Bonfield & District Lions Club
 Bow Island Lions Club
 Bracebridge Lions Club
 Brampton Village Lions Club
 Brandon Wheat City Lions Club
 Bredenburg & District Lions Club
 Bridgeport Lioness Club
 Bridgeport Lions Club
 Brightbank & District Lions Club
 Brighton Leo Club
 Brockville Lions Club
 Bruderheim Lions Club
 Burlington Lions Club
 Burnaby Lougheed Lions Club
 Burquitlam Lions Club
 Burstall Bordertown Lions Club

Burstall District Lions Club
 Calgary Filipino Lions Club
 Calgary Mountainview Lions Club
 Calgary North Hill Lions Club
 Calgary Northeast Eyeopener Lions Club
 Calgary Wildrose Lions Club
 Calgary Woodcreek Lions Club
 Cedar Lions Club
 Central Butte District Lions Club
 Charlton-Englehart Lions Club
 Chatham (ON) Lions Club
 Chilliwack Dogwood Monarch Lions Club
 Chilliwack Stellers Jay Lions Club
 Chinguacousy Lions Club
 Christopher-Emma Lakeland Lions Club
 Club Lions Val d'Or
 Cremona Lions Club
 District 5-SKS
 District A-4
 District A-9 Lioness
 Dorintosh & District Lions Club
 Dryden Trillium Lions Club
 Duncan Lions Club
 Edmonton Host Lions Club
 Edmonton Southgate Lions Club
 Elrose Lions Club
 Eston Lions Club

Fairmont & District Lions Club
 Ferris Lions Club
 Flin Flon Lions Club
 Forestburg Lions Club
 Fowlers Corners & District Lions Club
 Gordon Head Lions Club
 Goulds Leo Club
 Grantham Lioness Club
 Gravenhurst Lions Club
 Greely Lions Club
 Halton K9 Lions Club
 Havelock (ON) Lions Club
 Hussar Lions Club
 Innerkip & District Lions Club
 Innisfil Lions Club
 Irvine & District Lions Club
 Kamloops Aberdeen Lions Club
 Kamloops Paddlewheelers Lions Club
 Kelowna Okanagan Mission Lions Club
 Kenora Lake of the Woods Lions Club
 Kirkfield & District Lions Club
 Labrador City Lions Club
 Lacombe Lions Club
 Lakeville Lions Club
 Lethbridge Host Lions Club
 Lethbridge West Lions Club
 Lincoln Lions Club

Lions and Lioness Clubs Contributions *(Continued)*

\$1,000 - \$2,499 (continued)

Lomond Lions Club
London Central Lions Club
Long Point Lions Club
Lumby Lions Club
Marsville & District Lions Club
Maryfield District Lions Club
Marystown Lions Club
McAdam Lions Club
Melita & Area Lions Club
Milton Lions Club
Mississauga Cooksville Lions Club
Montreal West Island Lions Club
Mount Forest Lions Club
Mount Forest Lions Club
Musquodoboit Harbour & District Lions Club
Nanaimo Harbor Lites Lioness Club
Napanee Lions Club
Nipawin Lions Club
Nobleton Lions Club
North Battleford Bonaventure Lions Club
North Battleford Lions Club
North Shuswap Lions Club
Okotoks Lions Club
O'Leary Lions Club
Owen Sound Lions Club
Paris Lioness Club
Paris Lions Club
Parrsboro Leo Club
Pefferlaw & District Lioness Club
Pemberton Lions Club

Perth Lions Club
Petrolia Lions Club
Pigeon Lake Lions Club
Pont-Rouge Lions Club
Port Stanley Lions Club
Port Union Lions Club
Portage La Prairie Lions Club
Portugal Cove St. Phillips Lions Club
Prince Albert Lions Club
Repentigny Lions Club
Rexton Lions Club
Richmond Lions Club
Ridgeway Lioness Club
Rimbey Lions Club
River Valley Lions Club
Rosetown Lions Club
Saskatoon Nutana Lions Club
Shell Lake & District Lions Club
Sherwood Park Breakfast Lions Club
Simcoe Lions Club
Sparwood Lions Club
St. Hyacinthe Lions Club
St. John's Lions Club
St. Joseph Island Lions Club
St. Luc Lions Club
Strathmore Lions Club
Sunderland Lions Club
Sunshine Coast Lions Club
Sweaburg & District Lions Club
Sydenham & District Lions Club

Taber Lions Club
Thornhill District Lions Club
Three Rivers Lions Club
Tiny Township Lions Club
Valleyview Overlanders Lions Club
Vancouver Cambie Lions Club
Vancouver Cathay Lions Club
Vancouver Diamond Lions Club
Vancouver East Lions Club
Wasaga Beach Lions Club
Waterford Lions Club
Waterloo Lions Club
West Hill Highland Creek Lions
Wetaskiwin Lions Club
Whitehorse Grey Mountain Lions Club
Williams Lake Lions Club
Winsloe Lions Club
Woolwich Community Lions Club
Wyoming Lioness Club
Wyoming Lions Club
York Lions Club
Yorkton Lions Club





Awards Programs

2015-2016 Judge Brian Stevenson Fellowships

Alberta

Corita Vachon
Candice Brideau
Marvin Barlow
Doug Smallwood
Paul Huska
Doris Morrison
Lynn Morrison
Malou Orio
Lulu Ongpin
Risa Elumir
Flo Wallis
Betty Ann Adams
Judi Glenn
Lydia Siapno
Jovita Magpantay
Maria Gemma Cruz
Alfonso Mapanao
Barbara Benyon
Tobias Terrill
Carol Molnar
Mary Readman
Clint Mellors
Larry Billings
Al Nugent
David Wallace
Pattie Liogier
Richard Griffiths

Tyler Bray
Sam Kolbinson
J.L. Bouchard
Anne McCluskey
Dick McElroy
Orest Schur
John Skolly
Rod Vandaele
W. Beth Campbell
Carole Clarke
Ward Anderson
Bev Dean
Peter Gregus
Dylan Fuls
Kelly Forster
Terry Halladay
Alfred Armstrong
Trevor Luchyk
Falk Riegel
Mel Hickey
Gerald Gaede
Audrey Stenbeck
Terry Hurlbut
Jens Steffen Brix Olsen
Judy Reddecopp
Michelle Oberhammer
R.W. "Bob" Cadue
Ron Teske
Kathleen Dalby

Eugene Kolotyliuk
Tina Ranson
Peter Moir
Suzanne Leshchysyn
Vernon Dean Arnold
Frances Sawiak
Real Berube
Joan Webber

British Columbia

Colin Mendham
Terry Levesque
Dave Mansbridge
Rob Smith
Aundrea Holmes
Debbie Martin
Fred Cote
Rick Obsnuiuk
Wayne Hendricks
Lin McPhee
Ray Pisoni
Doris Nicholson
Randine Desjardine
Ken Desjardine
Percy Stefura
Barbara Jean Levington
Anne Scott
Colin Van Blerk

Gary Reidel
Pete Peterson
Chris Morrison
Currie Grass
Vince Moule
Angie Royle
Steve Daugherty
Reggie Ho
Mary Donner
Ronald C. Beaton
Doris Leanne Moir
Jim Ferguson
Paul Adams
Jeremy Wong
Iven Tse
Kevin Pan
Stephen Ng
Angel Chan
Gary Lee
Sam Cheung
Vivian Y L Chan
Valerie Wong
Winnie Lai
Ken Cain
Claire Davidson
Sid Breckenridge
Lional Burnier

Manitoba

Roy Graham
Elmer Boucher
John Kuzub
Debbie Kuzub
Joyce McLennan
Peg Bradford
John Edwards
Len Kalinski
Ross Hadden
Bea Barnard

New Brunswick

Susan Sangster
Tanya Tays
George Tays
Jim Cameron
Wade Thomas
Bill Scott
Ed Evans
Art McFadden
Fred Johnston
Stan Amirault

Newfoundland

Norman Squire
Austin Hounsell
Ryan Hunt
David Foote
James R. Hayley
Rick Brown
Shirley Rose
Fred Coombs
Marie Hynes
Steve White
Georgina Bowles
Robert Mackey
Minnie Lodge
Donald Cotter
Madonna Duffett
Howard Duffett
Rexford Lodge
Jeffery Strugnell
Robert Beauchamp
Bernadette Vincent
Doreen Burton



Award Programs (Continued)

Ontario

George McCully
Rick Lush
Micheline Lush
David Campbell
Margaret Tucker
Lindsay Clarke
Laurie Tellier
Jamie Jones
Jennifer Pegg
Elizabeth Pegg
Robert Pegg
William (Bill) Bargent
Ralph Krueger
Evan Keays
Richard Ratensperger
Carl Robinson
Kristina Jensen
Ray Ball
Ken Suthons
Les Henwood
Glen Hyland
Ellen Boisvenue
John Stacey
Pat Jaskula
Larry Wilkins
Robert Mitchell
Richard Mansell

Larry Brown
Bonnie Denison
Becky Brant
George Laurencic
Michael Geske
Joanne Lystar
Sheila Morra
Russ Mitchell
Linda Curran
Ray Burns
Wendy Porter Greason
Madeleine Larochelle
Lily Ploughman
Richard Joy
Nicole Newton
Ken McGruthers
Lyle Gawley
Lorraine Gauthier
Steven Fricker
Sharon Fleguel
Marilyn Menard
Glenda Lyon
Jack Hayes
Doug Cheshire
Shelley Gauthier
Alma Ladouceur
Bert Shaw
H.H. Ernie Moore
Bill Fell

Cathy Forma
Karen Simpson
Margaret Dawson
David (JJ) Fast
Ron Armstrong
Darrell Kirby

Quebec

Huguette Hins
Marc Hébert
François Richard
Claire Minville
Bertrand Boutin
Jocelyn Lavoie
Alain Dumont
Cléo Nadeau
Richard Gendron
Monique Wagner
Luc Charbonneau
René Lévesque
Richard Schinck
Johanne Mailloux
Deni Dussault
Philippe L'Hémeury
Bernard Lessard
Constant Di Girolamo
Dave Renwick
Lise Desrosiers

Nova Scotia

Sue Dexter-White
Bob Lyle

PEI

Denis Gallant
Isabel Yuill
Gordon MacDougall
Barry Stewart
George Lamont
Bruce Leclair
Doug Cook

Saskatchewan

Chistine Urchyshyn
Pat Gehrke
Leo Coburn
Greg Osborne
Pat Jackson
Derrick Hartlin
Lyle Adair
Charlyn McGregor
Linda Laycock
Frances Patterson
Harry Enequist
Brad Miller
Art Frie
Ervin Carlier

2015-2016 Progressive Judge Brian Stevenson Fellowships

Alberta

Edy Ongpin
Ken Albertson

British Columbia

Ray Tremblay
David Coppin
Marilyn Martin
Don Shove
Elsie Tse

New Brunswick

Jan Phillips

Ontario

Larry Taylor

PEI

Mark Lockhart

Quebec

Raymonde Boutin
Daniel Poulin



Award Programs *(Continued)*

2015-2016 Lions Foundation of Canada Fellowships

Alberta

Hazel Hiebert
Kevin Doyle
Roger Pilkington

British Columbia

Shaoyi Ruan

Manitoba

Pamela Habing

Newfoundland

Maxine Woods
Mike Seward

PEI

Delbert Reeves
Sam Sanderson

Quebec

Michel Roy
Joël Lagrange

Saskatchewan

Laurie Toderian

Ontario

Gore Mutual Insurance Co.
Robert's Boxed Meat
Barry Dawn
Pat Kurtz
Neil Perry
Jamie Grove
Al Taylor
Bev Wilson
Chris Allen
Graham Varrin
Chris Chamberlain
Cathy Collins
Harvey Moore
Ralph Krueger
Ken Willis
Verna Creber
Gord Perry
Jim Ruse

2015-2016 Progressive Life Memberships

British Columbia

Irene Stokes
Don Stearns
Marilyn Martin
John Johnson

New Brunswick

Heather Burgess

Nova Scotia

John Stoddart

Ontario

James Brown
Margaret de Boer
Kathy Daoust
Archie Howard
Carol Keith
Chris Lewis
Jo-Anne Brytwak
Helena Copeland
Bob Knowles
Harold Hobson

Quebec

Céline Ouellet

100% Club Life Memberships

Club

Ajax Lions Club
Alexander Bay Lions Club
Botwood Lions Club
Carlyle District Lions Club
Clarenville Lions Club
Dundas (ON) Lions Club
East Royalty Lions Club
Edmonton Strathcona Lions Club
Guelph Lions Club
Long Point Lioness Club
Markham Lions Club
Parkdale Sherwood Lions Club
Stephenville Lioness Club
Streetsville Lions Club
Three Rivers Lions Club
Wadena District Lions Club
York Lions Club

2015 Patrons

Individual Patron Awards

PDG Bob Robinson
Ruth & Joseph Schembri
Karen Feikema

Corporate Patron Award

Pet Valu



Past Patron Awards

Individual Patron Awards

2014

Lynne Coulter, PCC
Pat Jaskula
Ward & Shirley Russell

2013

Lion Edward (Ted) Coombes
Ken Peters, PDG
Peter Wallis, PDG

2012

Lion Wenda Bourgeois
Lion Fred Phillips
Norm Johnson, PDG

2011

Bill Brown, PDG
Joe Andrew, PDG
Dr. Thomas Moreau
& Diane Brockman

2010

Lion Don McGowan
Lion Les Stevens
Charles Uhlman, PDG

2009

Fred Zorge, PDG
Pamela Wathen
Shavak Madon

2008

James W. Snow, PDG
Dr. Fraser Hale
Lion Norman MacEachern

2007

Terry Graham, PID
Lion Jean Graham
Allan B. Fox, PDG

2006

Phillip Chan, PZC
Dr. Thomas Hogg, DVM
George Hostick, PDG

2005

H.H. "Ernie" Moore, PID
Beverley Berger
Thomas Alton

2004

Jack Isaman, PID
Art Woods, PID
Bill Webber, PID

2003

Bruce Murray, PID
Judge Brian Stevenson, PIP
Bill Moody, PID

Corporate Patron Awards

2014

The Caroline Cunningham
Foundation for Epilepsy

2013

Unitron

2012

Fido

2011

PJ's Pets & Pets Unlimited

2010

Alcon Canada

2009

Lethbridge & District
Kennel Club

2008

Novartis Animal Health

Ralph Long, PID
Ken Green, PID
Ron Brown, PDG

Walk for Dog Guides Results

*This past year, **245** Walks raised **\$1,305,517**, setting a new fundraising record in the **30**-year history of this event!*

\$50,000+

Oakville, ON	\$84,252
Toronto - West, ON	\$83,957
Lethbridge, AB	\$57,554

\$25,000-\$49,999

Vancouver, BC	\$43,141
Kitchener Waterloo, ON	\$28,969
Grimsby, ON	\$26,306

\$10,000-\$24,999

Toronto Harbourfront, ON	\$23,875
Newcastle, ON	\$21,578
Georgetown, ON	\$20,273
Ottawa, ON	\$20,083
Fergus, ON	\$19,356
Calgary, AB	\$18,584
Orangeville, ON	\$14,378
Winnipeg, MB	\$13,722
Elmira, ON	\$13,620
Burlington, ON	\$12,671
Port Stanley, ON	\$12,495
London, ON	\$12,108
Nobleton, ON	\$11,473
Repentigny, PQ	\$11,375
Hagersville, ON	\$10,202
Hamilton, ON	\$10,001

\$5,000-\$9,999

St. Josephs Island, ON	\$9,744
Ajax, ON	\$9,326
Eston, SK	\$9,311
Saskatoon, SK	\$9,255
Bayfield, ON	\$9,052
North Bay, ON	\$8,769
Pincher Creek, AB	\$8,575
Sydney, NS	\$8,496
Fenwick, ON	\$8,279
Uxbridge, ON	\$8,007
Orillia, ON	\$7,802
Rexton, NB	\$7,737
(St.C) Grantham Lions, ON	\$7,706
Martensville, SK	\$7,647
Eastern Passage, NS	\$7,483
Peterborough, ON	\$7,443
(St.C) Merriton Lions, ON	\$7,337
Colborne, ON	\$7,125
Waterdown, ON	\$6,759
Kincardine, ON	\$6,724
Selkirk, ON	\$6,717
Mount Forest, ON	\$6,635
Portage la Prairie/ Oakville, MB	\$6,425
Taber, AB	\$6,425
Enderby , BC	\$6,376
Brampton, ON	\$6,375

Ear Falls, ON	\$6,350
Antigonish, NS	\$6,212
Omeme, ON	\$6,081
Caledonia, ON	\$6,021
Kingston, NS	\$6,005
Carstairs, AB	\$5,929
Central Butte, SK	\$5,896
Desboro , ON	\$5,893
Sooke, BC	\$5,580
Toronto - Beaches, ON	\$5,405
Sunderland, ON	\$5,355
Campbellford, ON	\$5,228
Saint-Hyacinthe, PQ	\$5,206
Riverview, NB	\$5,174
Mississauga, ON	\$5,011

Under \$5,000

North Rustico, PE	\$4,806
Vermilion Bay, ON	\$4,597
Deschambault, PQ	\$4,551
Milton, ON	\$4,540
Cambridge, ON	\$4,463
Kamloops, BC	\$4,450
Brighton, ON	\$4,230
Port Dover, ON	\$4,209
Ponoka , AB	\$4,149
Chepstow, ON	\$4,000
Wellington, ON	\$3,999
St-Agapit, PQ	\$3,900

Millbrook, ON	\$3,889
Grand Bend, ON	\$3,770
Maryhill, ON	\$3,670
Regina Beach, SK	\$3,613
Bredenbury, SK	\$3,577
Beaverton, ON	\$3,568
Wasaga Beach, ON	\$3,473
Enfield, NS	\$3,429
Winnipeg Beach, MB	\$3,428
Wellesley, ON	\$3,395
Thornhill, ON	\$3,388
Wasa, BC	\$3,350
Fredericton, NB	\$3,344
Pouch Cove, NL	\$3,225
Mahone Bay, NS	\$3,168
Stony Plain, AB	\$3,115
Tiverton, ON	\$3,104
Strathroy, ON	\$3,100
Sherbrooke, PQ	\$3,001
Sylvan Lake, AB	\$2,955
Erin, ON	\$2,935
Dryden, ON	\$2,855
Sioux Lookout, ON	\$2,785
Esterhazy, SK	\$2,760
Camrose, AB	\$2,742
Spruce View , AB	\$2,682
Digby, NS	\$2,671
Niagara Falls, ON	\$2,630
Vermilion, AB	\$2,614

Oliver, BC	\$2,582	Woodstock, ON	\$1,738	Formosa, ON	\$1,110	Thorold, ON	\$657
Pefferlaw, ON	\$2,537	Jemseg, NB	\$1,736	Fort Qu'Appelle, SK	\$1,070	Vegreville, AB	\$650
Nanaimo, BC	\$2,531	Lindsay, ON	\$1,669	Crystal City, MB	\$1,070	Courtenay, BC	\$625
Fenelon Falls, ON	\$2,529	Walkerton, ON	\$1,649	Carleton Place, ON	\$1,062	North Dundas , ON	\$603
Winsloe, PE	\$2,500	Okanagan Falls, BC	\$1,635	Middle Musquodoboit, NS	\$1,059	Granisle, BC	\$600
Smoky Lake, AB	\$2,465	Toronto - Scarborough, ON	\$1,625	Unity, SK	\$1,030	Neustadt, ON	\$600
Paris, ON	\$2,448	Goulds, NL	\$1,611	Golden, BC	\$1,000	Marystown, NL	\$600
Chilliwack, BC	\$2,410	Parry Sound, ON	\$1,606	St. John's, NL	\$1,000	Bedford, NS	\$562
New Germany, NS	\$2,372	Essex, ON	\$1,605	Hunter River, PE	\$940	Logan Lake, BC	\$540
Spiritwood, SK	\$2,350	Point Clark, ON	\$1,585	Warton, ON	\$936	Bridgewater, NS	\$513
Kipling, SK	\$2,317	Port Alberni, BC	\$1,581	Stayner, ON	\$925	Niagara-on-the-Lake, ON	\$505
Deer Lake, NL	\$2,309	Arnold's Cove, NL	\$1,569	Cornwall, ON	\$919	Cantley, ON	\$400
Shoal Lake, MB	\$2,303	Bancroft, ON	\$1,522	Swan River, MB	\$905	Sunnyside, NL	\$400
Kenora, ON	\$2,273	Wawa, ON	\$1,500	Grand Valley, ON	\$905	Tiny Township, ON	\$385
Barrie, ON	\$2,260	Goderich, ON	\$1,492	Kensington , PE	\$900	Brantford, ON	\$380
Kinmount, ON	\$2,221	Clifford, ON	\$1,455	Morinville, AB	\$885	Parrsboro, NS	\$370
Grande Prairie, AB	\$2,137	Pasadena, NL	\$1,423	Owen Sound, ON	\$836	Binscarth , MB	\$350
Hamiota, MB	\$2,084	Aldergrove, BC	\$1,415	Milford Station, NS	\$834	Fort Langley, BC	\$345
Birtle, MB	\$2,052	Brandon, MB	\$1,347	Minnedosa, MB	\$825	Claremont, ON	\$335
Bethune, SK	\$2,000	Jordan Station, ON	\$1,330	Atikokan, ON	\$790	North Edmonton, AB	\$313
Elmvale, ON	\$2,000	St-Romain, PQ	\$1,304	Gabriola Island, BC	\$755	Windsor, NS	\$306
Sudbury, ON	\$1,951	Wawanesa, MB	\$1,302	Haliburton, ON	\$751	Douglastown, NB	\$300
Lucknow, ON	\$1,946	Markham, ON	\$1,204	Rocky Mountain House, AB	\$747	Hampton, NB	\$300
Gander, NL	\$1,922	108 Mile Ranch, BC	\$1,200	Elkford, BC	\$735	Lillooet, BC	\$250
Goodwood, ON	\$1,905	Fort Frances, ON	\$1,200	Richmond Hill, ON	\$735	Barrie Pet Valu, ON	\$231
Cannington, ON	\$1,802	Old Perlican, NL	\$1,176	Deep Brook Waldec, NS	\$713	Sussex, NB	\$164
Port Colborne, ON	\$1,789	Mildmay, ON	\$1,140	Lacombe, AB	\$700	Twillingate, NL	\$125
Sauble Beach, ON	\$1,761	Canso, NS	\$1,115	Blackstock, ON	\$676	Petawawa, ON	\$110
Ste. Anne, MB	\$1,746	Alix, AB	\$1,110	Brockville, ON	\$670	Bracebridge, ON	\$95



**Our mission is to assist Canadians
with physical and medical disabilities
by providing them specially trained
Dog Guides at no cost.**

Canine Vision Dog Guides
for people who are blind or visually impaired

Hearing Ear Dog Guides
for people who are deaf or hard of hearing

Service Dog Guides
for people who have a physical disability

Seizure Response Dog Guides
for people who have epilepsy

Autism Assistance Dog Guides
for children with autism spectrum disorder

Diabetic Alert Dog Guides
for people with type 1 diabetes with
hypoglycemic unawareness

